

Unilock® Elements

TUSCANY SERIES



FIREPLACE

Two piece set (base and chimney), and it comes with stainless fire box, pipe, and metal termination cap. (Upgraded termination cap available.) 5620 lbs

\$6,999



HEARTH

Available in either arched or straight option. 1025 lbs

\$1,075



WOOD BOXES

Sold as a set of two and flank either side of the gas or standard fireplace. 3750 lbs per set

\$2,999



GRILL ISLAND

Available with Napoleon Prestige II Grill, protective cover, side burner, and stainless double door insert. 3800 lbs

\$5,999



BRICK OVEN

Two piece set (wood box base, brick oven), and it comes with metal termination cap, pipe and cooking utensils. 6000 lbs

\$9,499

CORDOVA SERIES



FIREPLACE

Two piece set (base and chimney), and it comes with stainless fire box, pipe, and metal termination cap available.) 5620 lbs

\$6,999



HEARTH

Available in straight style, fits gas and standard fireplace. 1025 lbs

\$1,075



WOOD BOXES

Sold as a set of two and flank either side of the gas or standard fireplace. 3750 lbs per set

\$2,999



GRILL ISLAND

Available with Napoleon Prestige II Grill, protective cover, side burner, and stainless double door insert. 3800 lbs

\$5,999

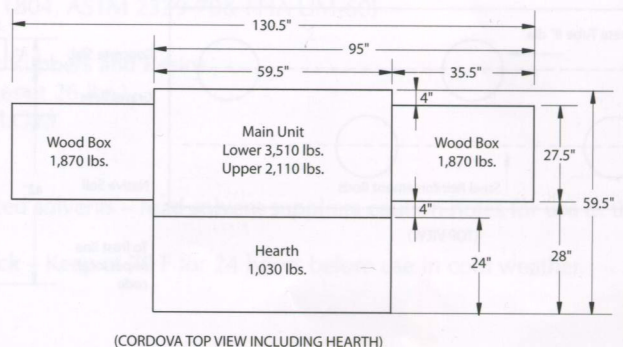
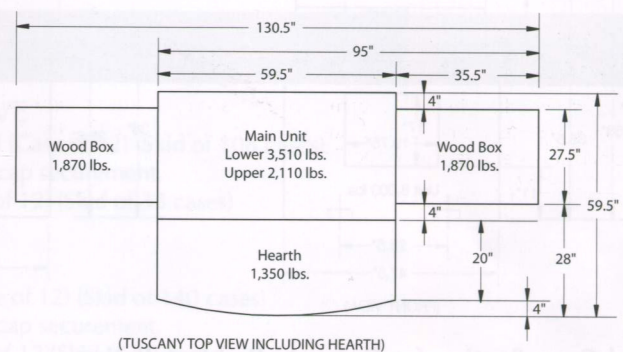
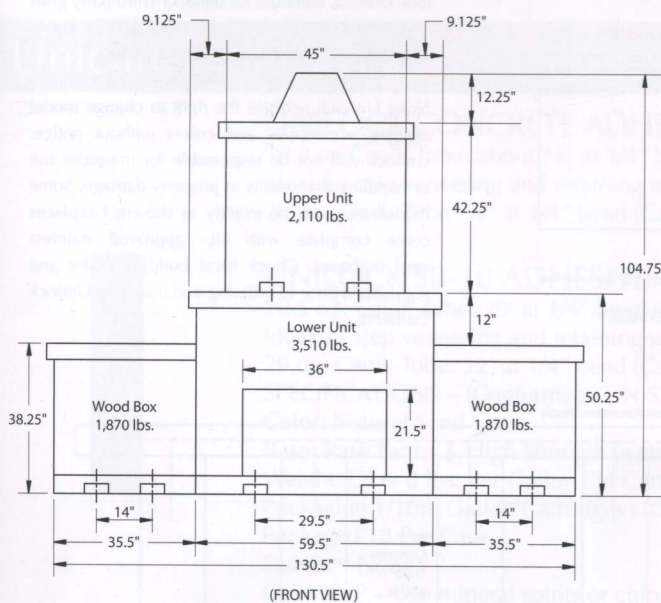


BRICK OVEN

Two piece set (wood box base, brick oven), and it comes with metal termination cap, pipe and cooking utensils. 6000 lbs

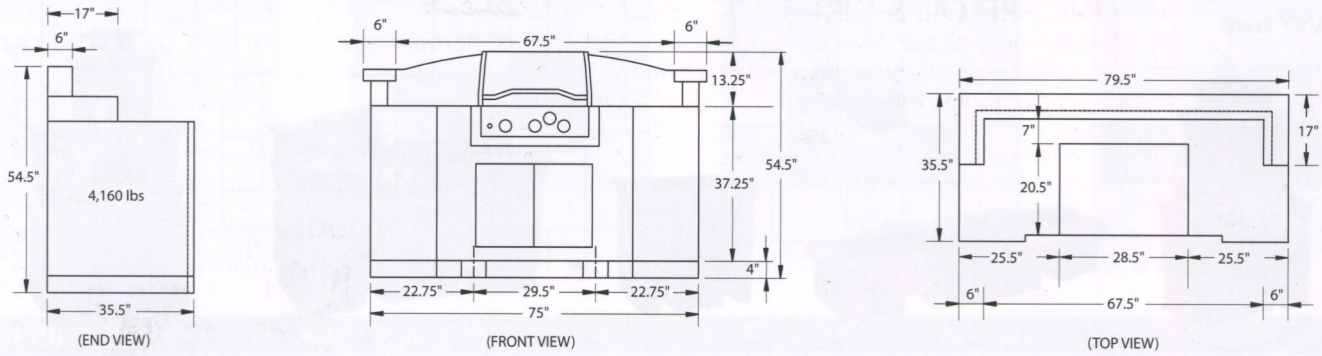
\$9,499

Tuscany & Cordova Fireplace

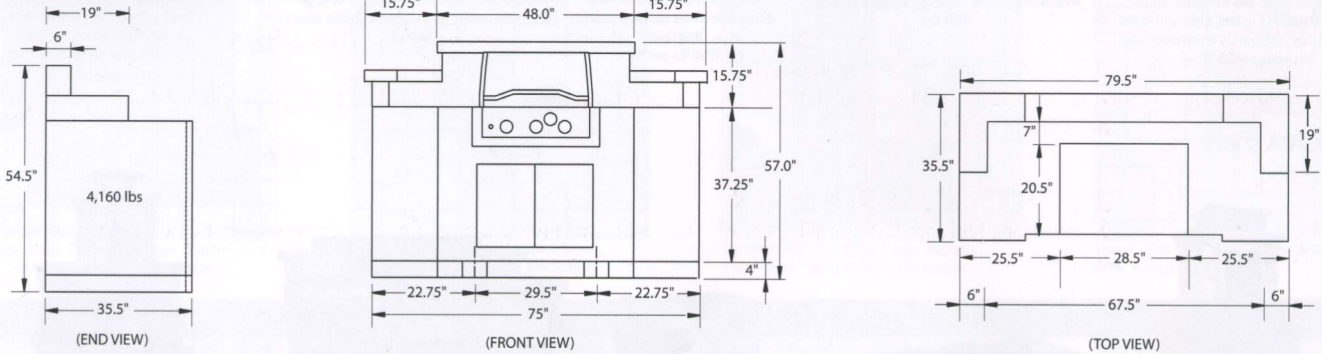


Unilock® Elements

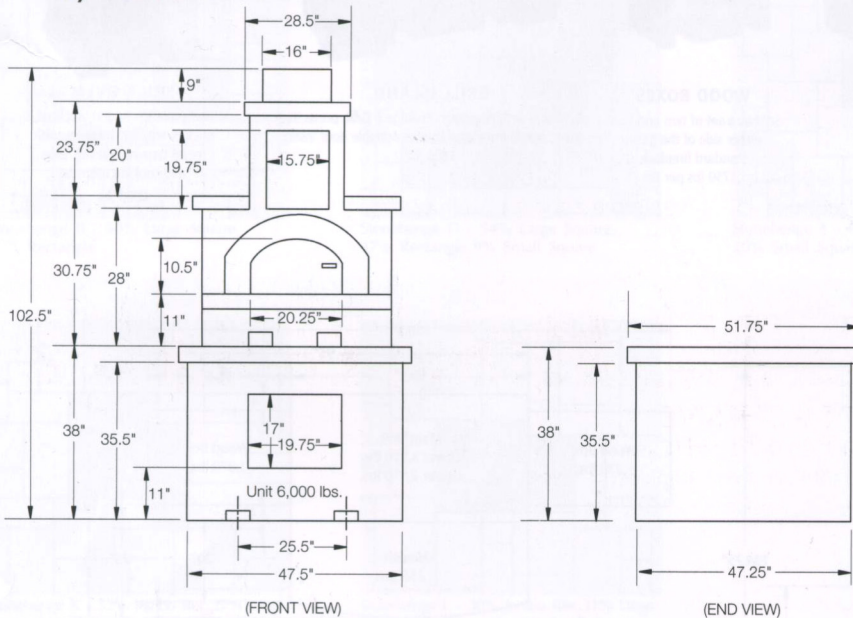
Tuscany Grill Island



Cordova Grill Island



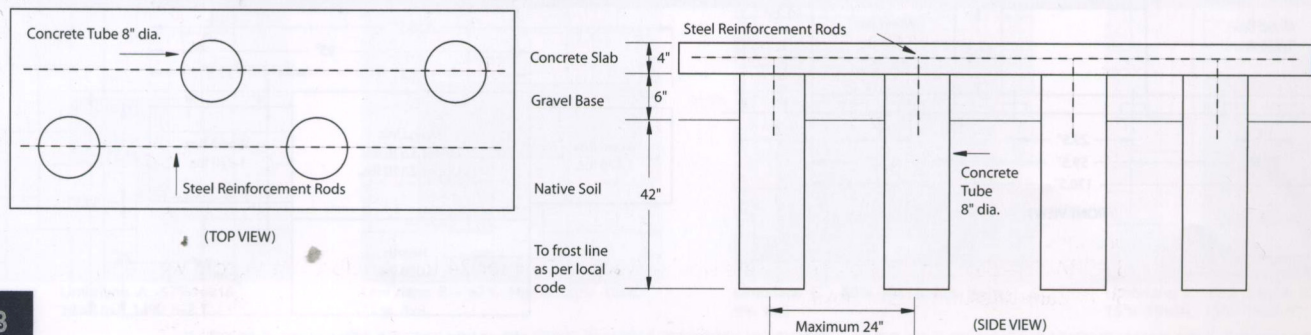
Tuscany & Cordova Pizza Oven



Guarantee: The standard Unilock guarantee applies to the units used to construct Unilock Elements. (See Unilock literature for details.) Third party grills and fireboxes carry their respective manufacturer's warranty, and may change without notice.

Note: Unilock reserves the right to change model designs, accessories and colors without notice. Unilock will not be responsible for improper use or handling that results in property damage. Some models may not be exactly as shown. Fireplaces come complete with UL- approved stainless steel fireboxes. Check local building codes and regulations prior to ordering and installing Unilock Elements.

Typical Cross Section for Concrete Pad Installation



Note: Although the structural integrity of the unit is not dependant on a concrete foundation it is highly recommended that you install MODS on a concrete foundation as shown to prevent any long-term settlement and to facilitate rapid installation.